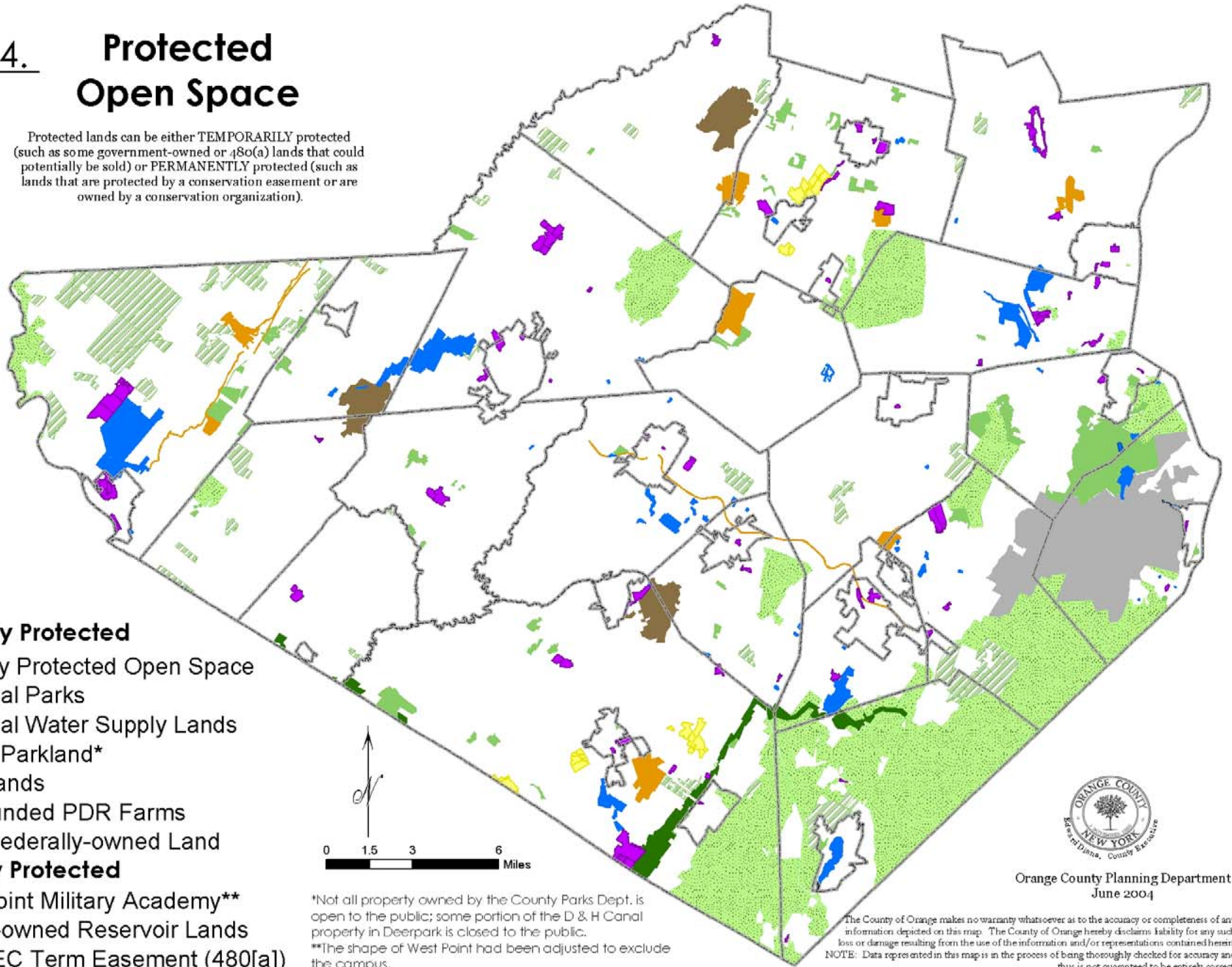


Map 4.

Protected Open Space

Protected lands can be either TEMPORARILY protected (such as some government-owned or 480(a) lands that could potentially be sold) or PERMANENTLY protected (such as lands that are protected by a conservation easement or are owned by a conservation organization).

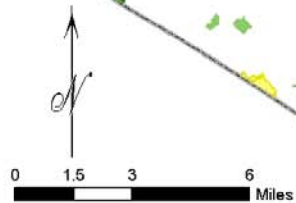


Permanently Protected

- Privately Protected Open Space
- Municipal Parks
- Municipal Water Supply Lands
- County Parkland*
- State Lands
- State-funded PDR Farms
- Other Federally-owned Land

Temporarily Protected

- West Point Military Academy**
- County-owned Reservoir Lands
- NYS DEC Term Easement (480[a])



*Not all property owned by the County Parks Dept. is open to the public; some portion of the D & H Canal property in Deerpark is closed to the public.

**The shape of West Point had been adjusted to exclude the campus.



Orange County Planning Department
June 2004

The County of Orange makes no warranty whatsoever as to the accuracy or completeness of any information depicted on this map. The County of Orange hereby disclaims liability for any such loss or damage resulting from the use of the information and/or representations contained herein. NOTE: Data represented in this map is in the process of being thoroughly checked for accuracy and this is not guaranteed to be entirely correct.