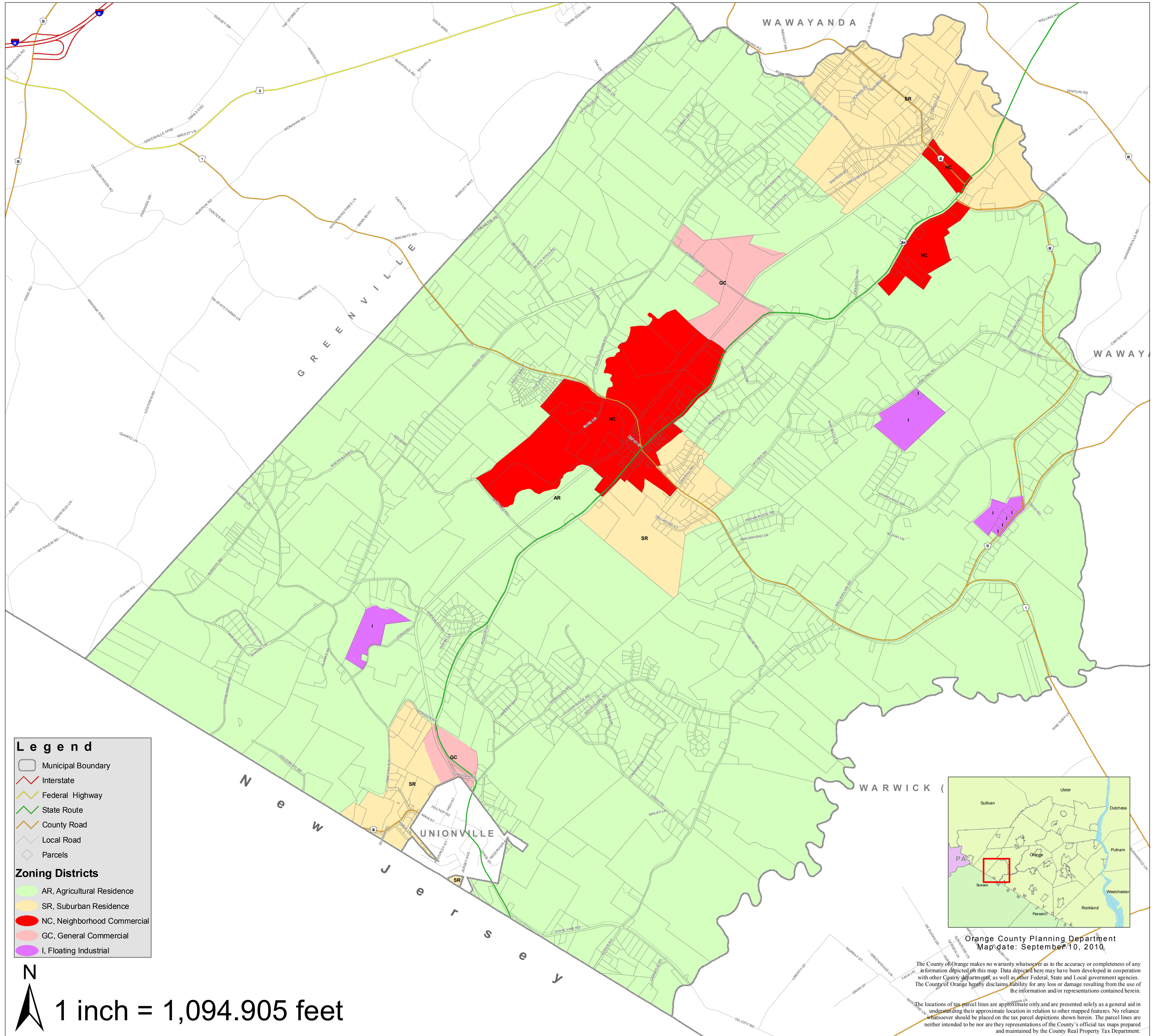


Minisink, New York Zoning Map

Last Amended:

****Please note: this map and the contents therein are currently under the process of verification by the Town of Minisink. The Planning Department does not guaranty the accuracy of the zoning information depicted here.



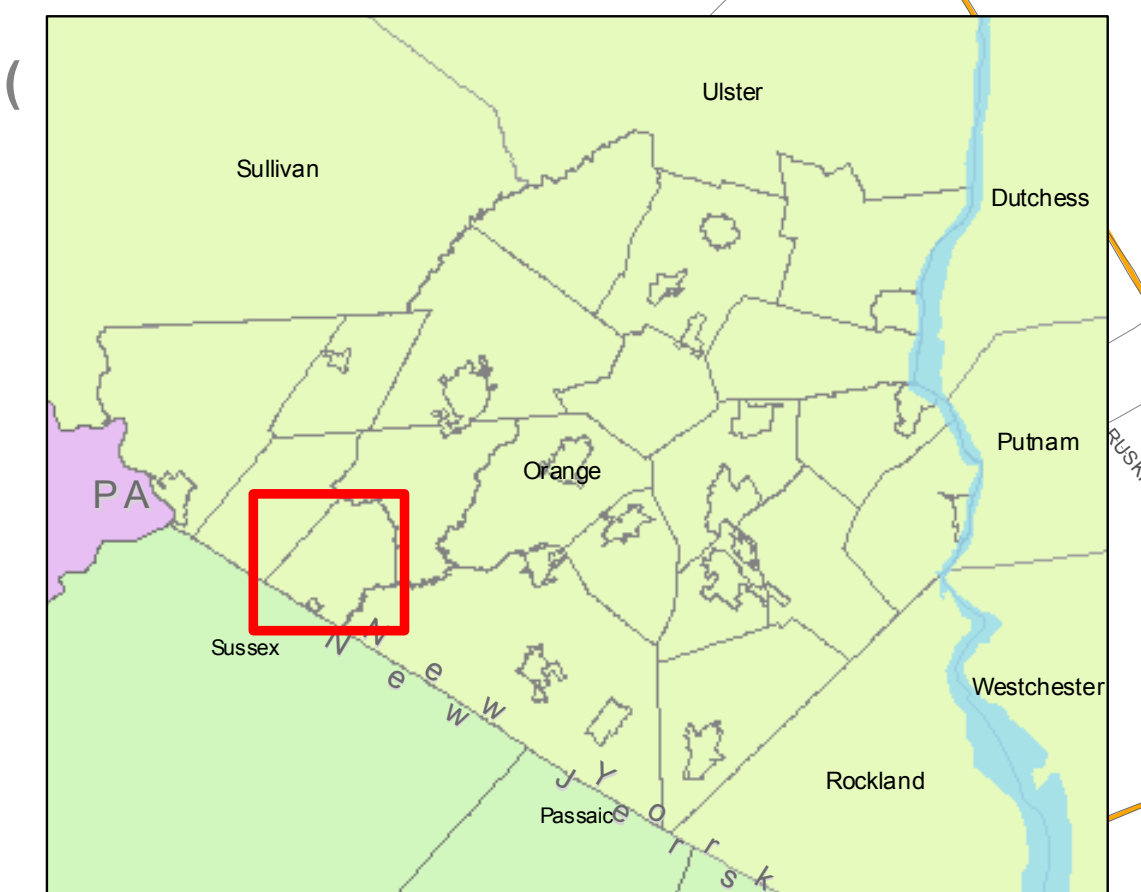
Legend

- Municipal Boundary
- Interstate
- Federal Highway
- State Route
- County Road
- Local Road
- Parcels

Zoning Districts

- AR, Agricultural Residence
- SR, Suburban Residence
- NC, Neighborhood Commercial
- GC, General Commercial
- I, Floating Industrial

N
1 inch = 1,094.905 feet



Orange County Planning Department
Map date: September 10, 2010

The County of Orange makes no warranty whatsoever as to the accuracy or completeness of any information depicted on this map. Data depicted here may have been developed in cooperation with other County departments, as well as other Federal, State and Local government agencies. The County of Orange hereby disclaims liability for any loss or damage resulting from the use of the information and/or representations contained herein.

The locations of tax parcel lines are approximate only and are presented solely as a general aid in understanding their approximate location in relation to other mapped features. No reliance whatsoever should be placed on the tax parcel depictions shown herein. The parcel lines are neither intended to be nor are they representations of the County's official tax maps prepared and maintained by the County Real Property Tax Department.