

This is the official Zoning Map of the Village of South Blooming Grove, adopted February 9, 2009. Signed copies are on file at the Orange County Department of Planning and the municipal clerk's office.

South Blooming Grove, New York

Zoning Map

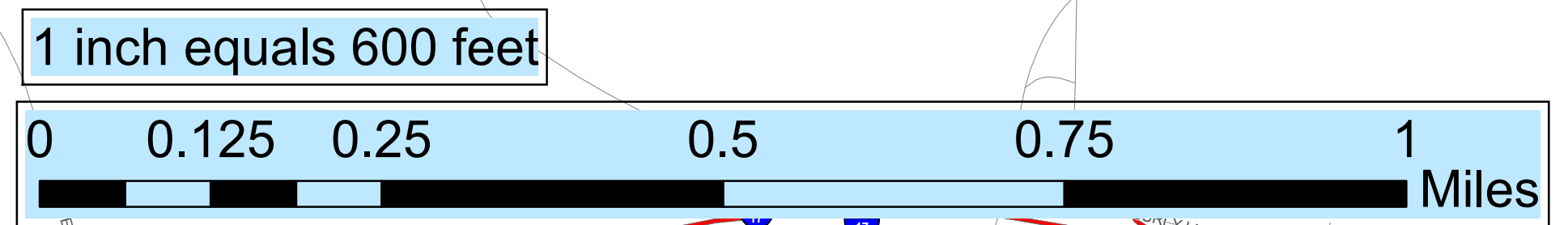
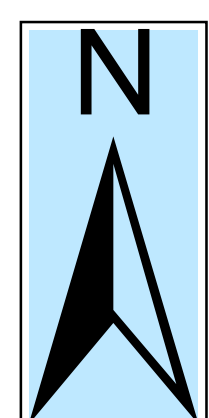
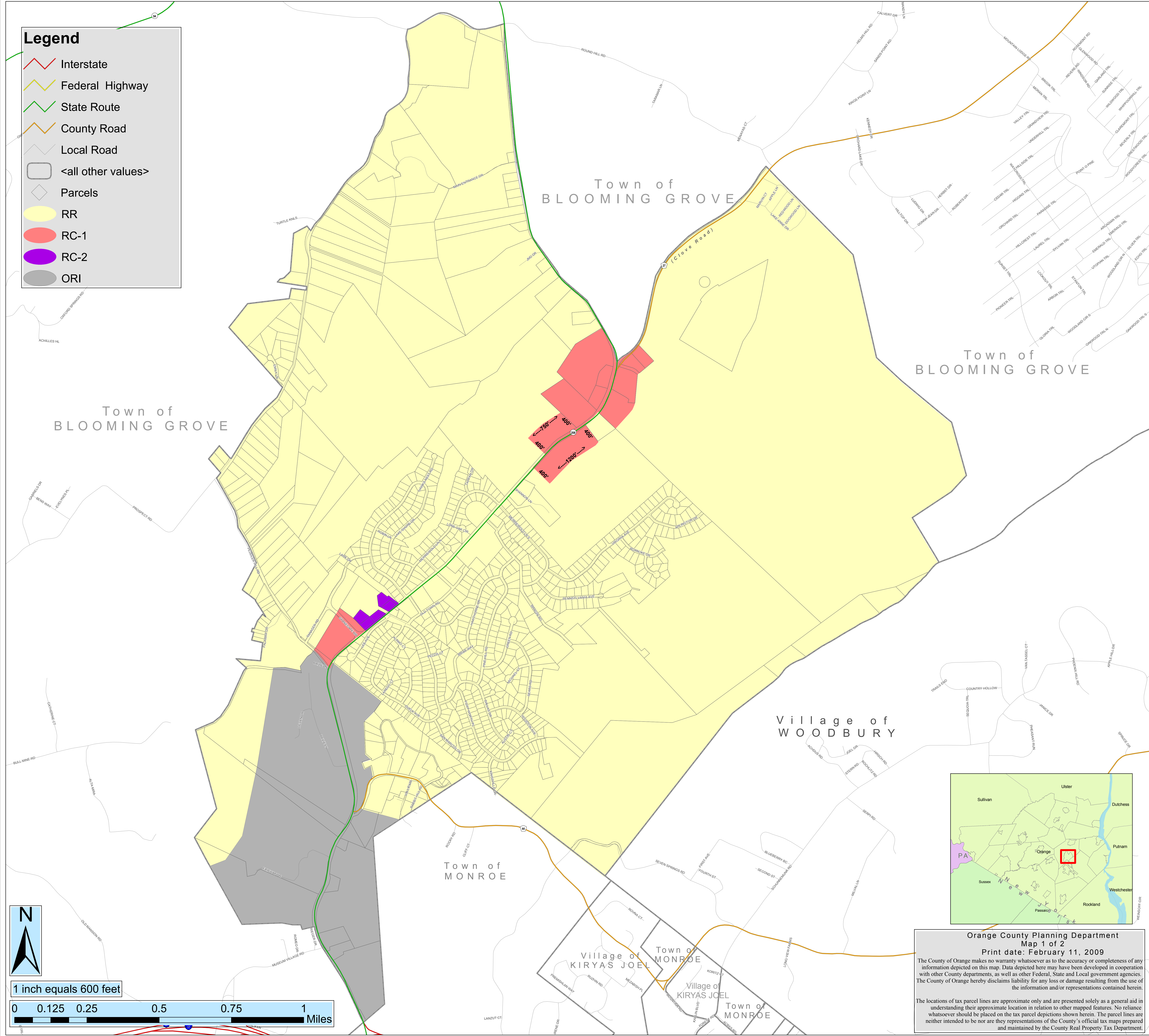
Adopted February 9, 2009



Edward A. Diana
County Executive

Legend

- Interstate
- Federal Highway
- State Route
- County Road
- Local Road
- <all other values>
- Parcels
- RR
- RC-1
- RC-2
- ORI



Orange County Planning Department
Map 1 of 2
Print date: February 11, 2009

The County of Orange makes no warranty whatsoever as to the accuracy or completeness of any information depicted on this map. Data depicted here may have been developed in cooperation with other County departments, as well as other Federal, State and Local government agencies. The County of Orange hereby disclaims liability for any loss or damage resulting from the use of the information and/or representations contained herein.

The locations of tax parcel lines are approximate only and are presented solely as a general aid in understanding their approximate location in relation to other mapped features. No reliance whatsoever should be placed on the tax parcel depictions shown herein. The parcel lines are neither intended to be nor are they representations of the County's official tax maps prepared and maintained by the County Real Property Tax Department.