

## **New York State Route 17 - Exit 131 Overview**

Exit 131 is located in the Town of Woodbury, Orange County. Exit 131 is located at the intersection of New York State Route 17 and New York State Route 32. Exit 131 is adjacent to the Harriman Toll Barrier to the New York State Thruway System.

The purpose of the Exit 131 reconstruction project is to improve traffic conditions at the interchange and along NYS Route 32, while bringing Route 17 up to interstate standards. The New York State Department of Transportation, Region 8, has completed the design process for the project and is continuing with acquiring right of way.

It was during the design process around 2009 that funding constraints became more severe and the project design was divided in two stages such that some improvements could be undertaken with somewhat less funding. The cost of the entire project at the time (both stages) was estimated at approximately \$79 Million. The funding estimate for Stage 1 was approximately \$38 Million. Federal and State funding for construction for the first stage, which was at one time scheduled for 2015 and then 2017, is currently unavailable. The Project Identification Number (PIN) for Stage 1 is 800684; the PIN for Stage 2 is 800696.

NYS DOT submitted an application to the Federal “Transportation Investments Generating Economic Recovery” (TIGER) program in 2009. The TIGER program is extremely competitive; no funding was awarded. The TIGER application provides a very detailed description of the project and its benefits.

Stage 1 of the project includes reconstruction of the Route 32 bridge over Route 17 and a new loop ramp for southbound Route 32 traffic to eastbound Route 17. This will provide significant improvements to traffic operations by eliminating the southbound double left turning lanes from Route 32 to Route 17. In the process, this intersection will also be eliminated which is expected to enhance traffic progression through the Route 32 corridor. The loop ramp was a key recommendation from the Southeast Orange County Transportation and Land Use Study completed in 2004.

Stage 2 of the project will reconstruct the Route 17 westbound ramps and improve the Nininger Road and Route 32 intersections north of Route 17 in front of Woodbury Common. With this phase, access points to and from Woodbury Common will be increased from 2 to 3. The improvements include a reconstructed Woodbury Common North Driveway, and entrance only slip ramp from northbound Route 32 and an entrance/exit driveway connecting to the Woodbury Common Ring Road.

On the next page is a graphic depicted both stages of the Exit 131 project as presently designed.

NYS DOT Phasing of Exit 131 Construction; Contract 1 originally scheduled for 2013; delayed once to 2017; now on indefinite hold (awaiting \$\$)

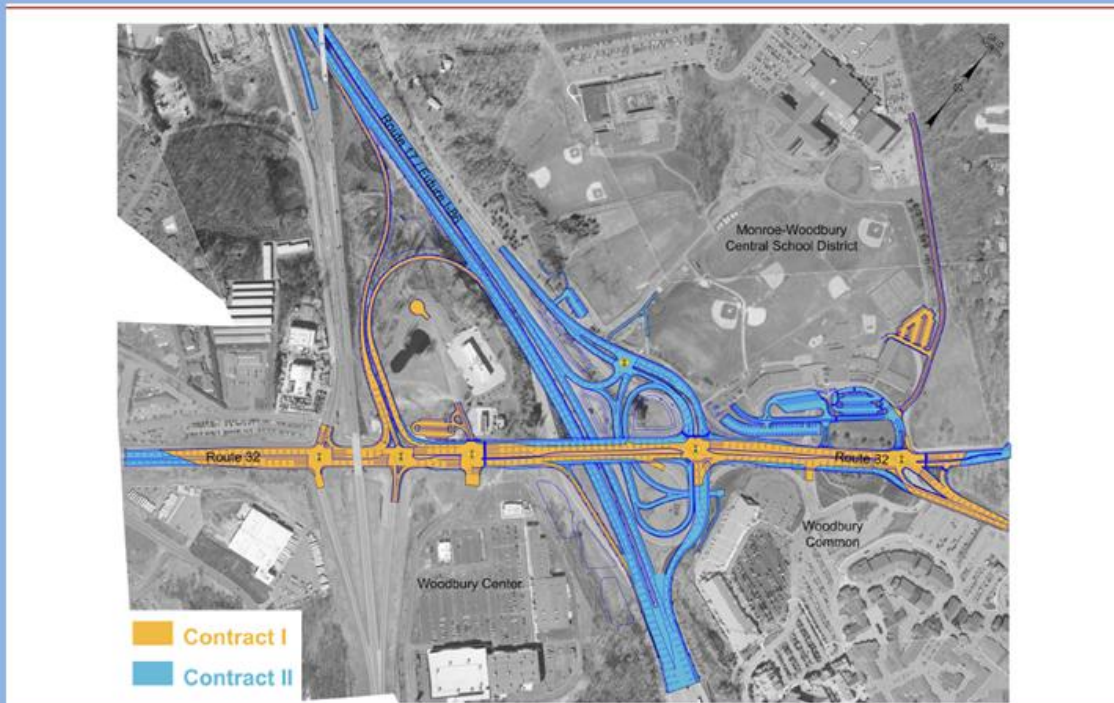


Exhibit 1.C: PREFERRED ALTERNATIVE - Construction Contracts I & II  
(Nininger Extension Modified, Signalized Option Shown)

